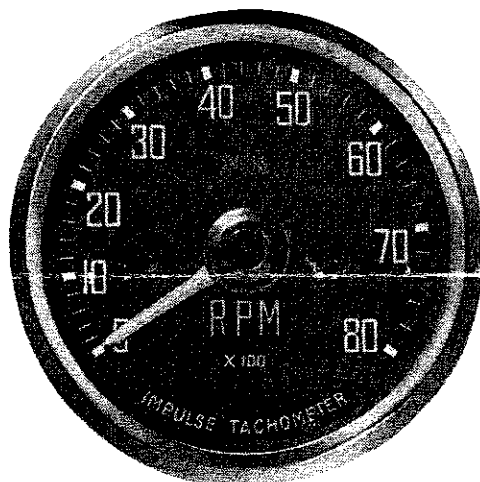


SMITHS

IMPULSE TACHOMETER



CODES IT4 and IT6

Black dial, white figures
white pointer, chrome bezel

For 6 or 12 volt,
4 or 6 cylinder vehicles

INTERNAL ILLUMINATION • SIMPLE INSTALLATION • ACCURATE & RELIABLE • 12 MONTHS GUARANTEE

For the keen motorist and the driver wishing to make the most of a car's performance, it is essential at all times to know the R.P.M. of the engine. Only by having this information can one be fully aware of the engine and gear box behaviour of one's car, and thus be sure that the engine is being used only **within its recommended safe performance limits**.

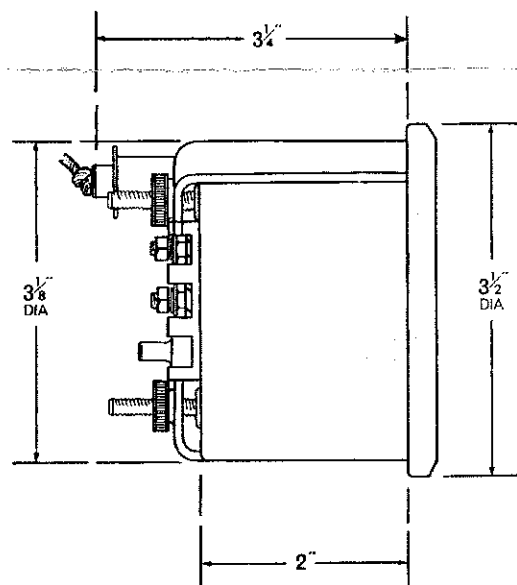
Engineers have put many years of experience and research into developing this safe and reliable transistorised tachometer—safe because it in no way interferes with the normal running of the car's ignition system—reliable because it has been tested and proved on road cars, rally cars and racing cars and is now used by almost every leading car manufacturer. Also it cannot be affected by eddy currents in the H.T. leads, by the distributor contact setting, by erosion of the sparking plug points or by differences in the gap settings.

Two instruments are available—

Code No. IT4 FOR 4 CYLINDER (or 2 cylinder, 2 stroke) I.C. petrol engines, employing a 6 or 12 volt, positive or negative earth, coil-ignition system.

Code No. IT6 FOR 6 CYLINDER (or 3 cylinder, 2 stroke) I.C. petrol engines, employing a 6 or 12 volt, positive or negative earth, coil-ignition system.

Both instruments are 80 mm. in diameter and are calibrated 0-8,000 R.P.M. They are supplied as complete kits, ready-to-fit, including a mounting bracket.



CODES IT4 and IT6

WILL INDICATE

The maximum performance that can be used safely in every gear, whilst avoiding the risk of damage due to over-revving the engine.

FITTING INSTRUCTIONS OVERLEAF

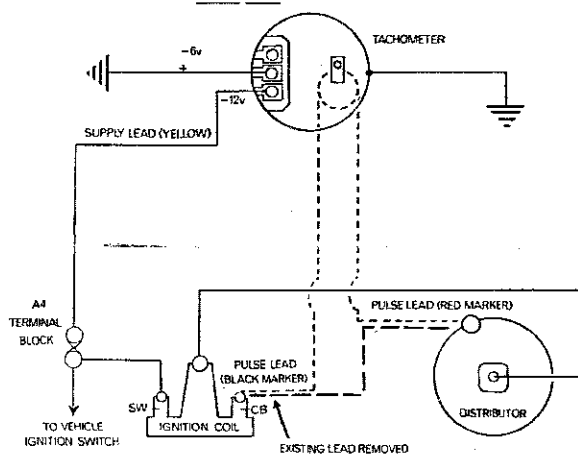
IMPULSE TACHOMETER—FITTING INSTRUCTIONS

The method of fitting the IT4 and IT6 instruments is identical. The tachometers are supplied complete with the bracket illustrated. If there is insufficient room on the existing dashboard to cut an aperture

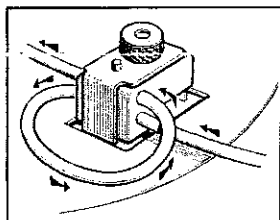
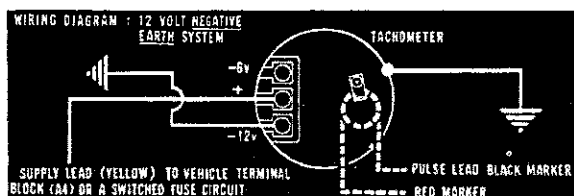
of $3\frac{3}{16}$ " diameter, this bracket can be used to mount the instrument in a convenient position under the dashboard.



WIRING DIAGRAM : 12V POSITIVE EARTH SYSTEM



LEAD POLARITY TO BE REVERSED FOR NEGATIVE EARTH SYSTEMS



POSITIVE EARTH CONNECTIONS

Remove the lead connecting the contact breaker terminal (C.B.) on the ignition coil to the contact breaker terminal on the engine distributor.

Connect the white lead identified by a black marker to the C.B. terminal on the ignition coil, and the white lead identified by the red marker to the terminal on the engine distributor.

Determine the vehicle battery voltage and cut the yellow lead supplied to required length and connect from appropriate terminal, i.e., -12 volt or -6 volt, located on the rear of tachometer and thence to A4 terminal on the vehicle terminal block or to a switched fused circuit. It is most important to determine the correct voltage and to exercise care in selection of the appropriate instrument terminal as incorrect connection will damage the movement within. From the centre terminal on the tachometer marked '+' connect the balance of the yellow lead and earth instrument to a suitable point on the engine frame. Finally connect the lead from the bulb holder, supplied with the tachometer, to a suitable point in the existing instrument illumination circuit. Ensure that the instrument case is properly earthed, making a separate earthing connection if necessary.

NEGATIVE EARTH CONNECTIONS

To operate the instrument on a vehicle with a negative earth electrical system, the ignition impulse lead and electrical supply lead are connected as follows:

Impulse Lead: Red marker to ignition coil terminal, black marker to engine distributor terminal.

Electrical Supply: Lead from -12 volt or -6 volt terminal (as applicable) to earth. Lead from terminal marked '+' to A4 terminal or a switched fused circuit.

IMPORTANT

If it should be necessary to adjust the length of white pulse lead on either side of the plastic moulding at the rear of the instrument do not remove the white lead, but make any adjustment by moving the lead through the block as indicated in the sketch. If a longer overall length of lead is required, a further length of type 14/010 wire may be added, but it is important to make a secure and clean connection.



SMITHS INDUSTRIES LIMITED

MOTOR ACCESSORY DIVISION

**SALES & SERVICE
OXGATE LANE
LONDON NW2**

Tel: GLAdstone 8030 Grams: Speedofac, London Telex: 22671

DEPOTS: BRISTOL: 7 Bath Road, 4. Tel: Bristol 70314/5 GLASGOW: 123-145 North Street, C.3. Tel: Glasgow Central 3972

MANCHESTER: 780 Chester Road, Stretford. Tel: Manchester Longford 2414 BELFAST: 19 Ormeau Avenue. Tel: Belfast 32911