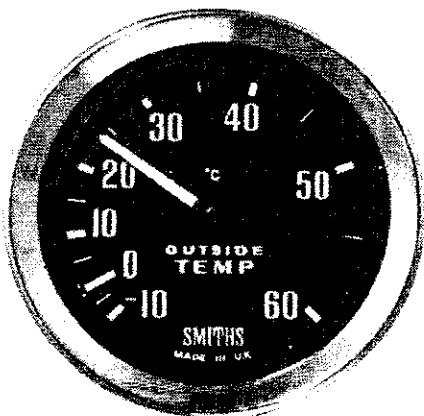


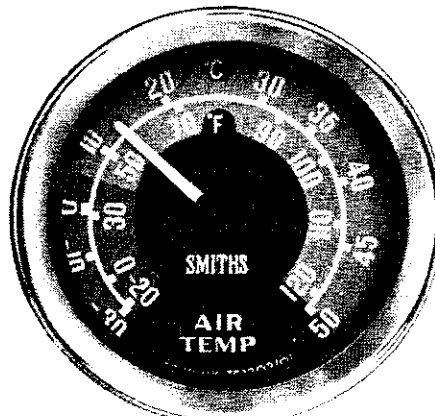
# SMITHS

## AIR TEMPERATURE GAUGE



### CODE ATB

Black dial, white figures,  
white pointer, chrome bezel



### CODE ATC

Red, green and black dial,  
white pointer, chrome bezel.

**INTERNAL ILLUMINATION • SIMPLE TO INSTALL • ACCURATE & RELIABLE • 12 MONTHS GUARANTEE**

This is an accurate, precision-engineered instrument designed to show the ambient air temperature outside the car, whilst stationary or moving. The gauge is internally illuminated for night driving. It can either be mounted in the existing dashboard, if there is sufficient space, or in a special Smiths instrument mounting panel—further details of which are shown overleaf. The gauge is connected by a length of capillary to a temperature sensing unit which is fitted externally.

#### ICE WARNING

The air temperature gauge provides a warning of freezing conditions, indicating the risk of encountering ice on the roads. It will be a valuable contribution to YOUR SAFETY. Also as winter approaches, low readings on the gauge provide an accurate indication as to when it is necessary to add Bluecol Anti-Freeze to the cooling system.

#### SIMPLE INSTALLATION

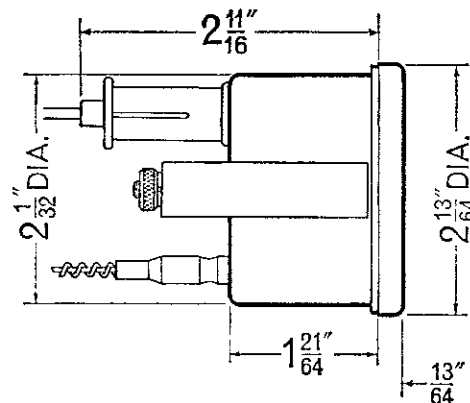
The instrument is supplied as a complete kit ready to fit. No special tools are required and complete instructions are provided overleaf.

#### ATB

This instrument is calibrated in degrees centigrade and has a temperature range of  $-10^{\circ}\text{C}$  to  $+60^{\circ}\text{C}$ . It is supplied with a 10 foot capillary.

#### ATC

For those motorists who are likely to encounter extremely cold conditions this instrument is calibrated from  $-30^{\circ}\text{C}$  to  $+50^{\circ}\text{C}$ . It also shows fahrenheit equivalents. The ATC has a coloured dial in two sections, green and red. The red section serves to indicate when ice is likely to be encountered on the road. This instrument is supplied with a 13 foot capillary.



### CODES ATB and ATC

### WILL INDICATE

Outside air temperature  
Danger of ice on roads  
Need for Bluecol Anti-Freeze in cooling system

Recommended  
Retail Prices

ATB 85/-

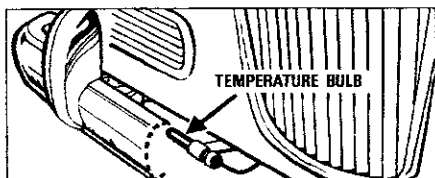
ATC 95/-

# AIR TEMPERATURE GAUGE FITTING INSTRUCTIONS

Establish a suitable position for mounting the instrument, either in the dashboard if there is space, or in a Smiths Instrument Mounting Panel. The sensing unit (temperature bulb) should be clamped in a convenient position behind the front bumper, out of the main air-stream, but not too close to the radiator. The bracket supplied to hold the sensing unit can usually be clamped to one of the existing bumper bolts, otherwise a separate bolt will have to be used. In some cases there is an existing hole in the bulkhead through which the capillary tube can be run; if not, a 1" diameter hole must be cut. After fitting, the grommet provided on the capillary tube should be inserted in this hole to hold the capillary steady and to prevent draughts. The capillary tube should be cleated to the car body near to the bulb fixture behind the front bumper, without any intervening coils. Thereafter cleat the capillary to the car body, at points that do not become excessively hot, so that unsupported lengths do not exceed 8". Any excess length of capillary should be formed into coils of not less than 2" diameter at a convenient place between two points where the tube is cleated to the car body. Connect the lead from the bulb holder, supplied with the instrument, to a convenient point in the existing lighting circuit. Ensure that the instrument case is properly earthed, making a separate earthing connection if necessary.

#### IMPORTANT—THE CAPILLARY TUBE:

1. On no account must it be disconnected from the bulb or the gauge
2. It must not be sharply bent or twisted.
3. All bends should be made with the fingers and should not be less than 1" radius.
4. No sharp tools should be applied to it.



#### INSTRUMENT MOUNTING PANELS

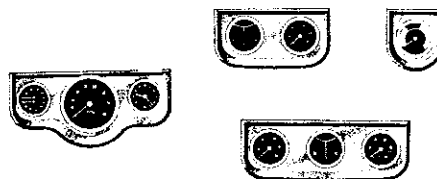
When mounting additional instruments, it is not always convenient or possible to cut the necessary apertures in the dashboard. In such cases one of the range of attractively designed Smiths instrument mounting panels should be used. A few details are given below.



De-Luxe Sub Panel—Code PAD. To hold two 2" instruments. This has a chromium bezel and silver background.



Standard Mounting Panels—Codes PA1, PA2, PA3. To hold one, two or three 2" instruments. These have a silver grey finish which can easily be coloured to match the existing dashboard if required.



Super Sub Panels—Codes SP1, SP2, SP3, SPT3. To hold one, two or three 2" instruments or (SPT3) to hold two 2" instruments and one Impulse Tachometer 3½" diameter. These panels have an attractive simulated black leather grained finish.

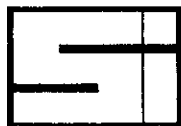
*Full details of Smiths Instrument Mounting Panels are provided on a separate leaflet.*

#### OTHER SMITHS SUPPLEMENTARY INSTRUMENTS

Designed to save you time, trouble and money by telling you the facts about your car before the failures occur.

WATER TEMPERATURE GAUGE  
IMPULSE TACHOMETER  
BATTERY CONDITION INDICATOR  
ELECTRIC CLOCK  
OIL TEMPERATURE GAUGE

VACUUM GAUGE  
OIL PRESSURE GAUGE  
PERFORMANCE GAUGE  
AMMETER  
DUAL GAUGE



**SMITHS INDUSTRIES LIMITED**

**MOTOR ACCESSORY DIVISION**

**SALES & SERVICE  
OXGATE LANE  
LONDON NW2**

Tel: GLAdstone 8030 Grams: Speedofac, London Telex: 22671

**DEPOTS:** BRISTOL: 7 Bath Road, 4. Tel: Bristol 70314/5 GLASGOW: 123-145 North Street, C3. Tel: Glasgow Central 3972  
MANCHESTER: 780 Chester Road, Stretford. Tel: Manchester Longford 2414 BELFAST: 19 Ormeau Avenue. Tel: Belfast 32911